



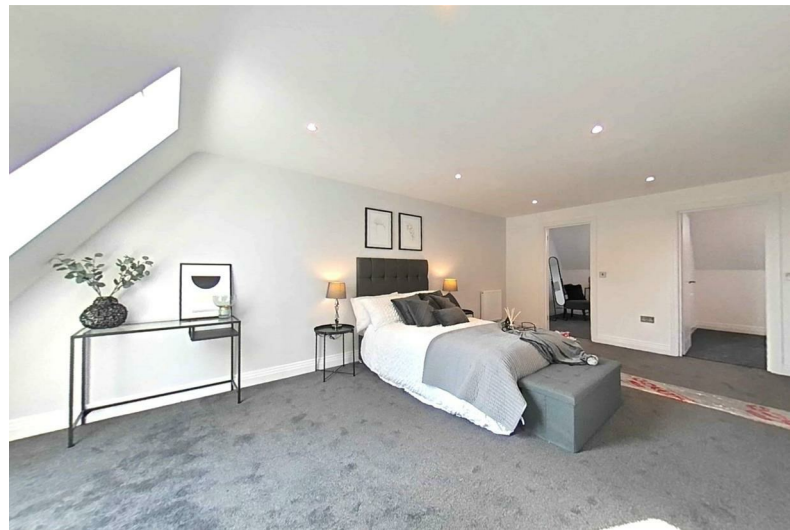
Chestnut Drive

Slough SL1

Price Guide £600,000



Chestnut Drive Slough SL1



Description

Last House Remaining - Stunning new home in a gated development, designed for family living with spacious rooms, modern amenities, and great schools nearby including Burnham Grammar. Enjoy open-plan living, a master suite, and peace of mind with a 10-year warranty.

One of four exquisite brand-new homes

Spacious reception room with bi-folding doors

'His & Her' walk-in wardrobe to main bedroom

Underfloor heating to ground floor

Final house remaining

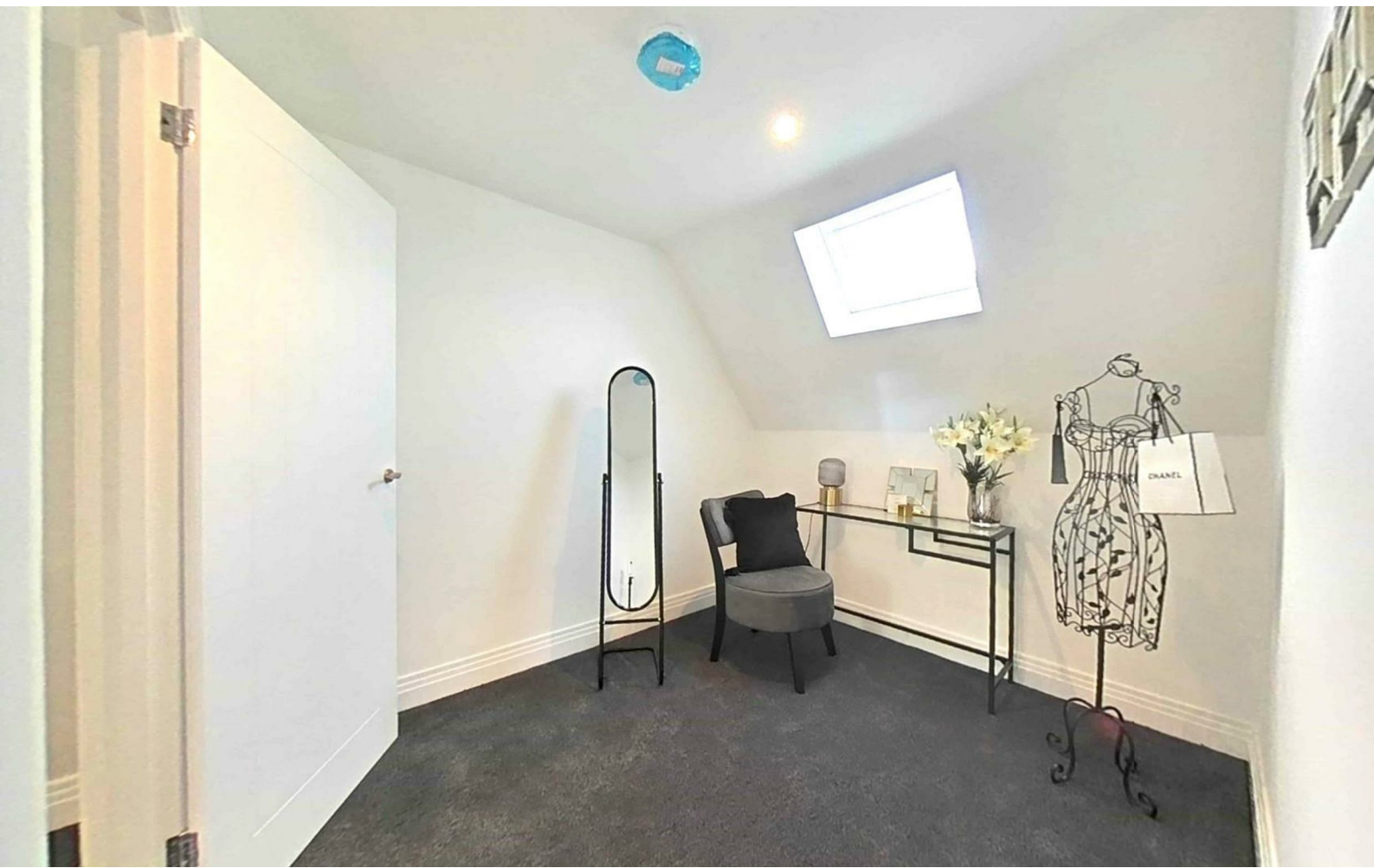
Private Gated Development with parking & garden

2 Ensuites & Family Bathroom

Spacious 3/4 Bedrooms

Juliet balconies to two bedrooms

10 year warranty

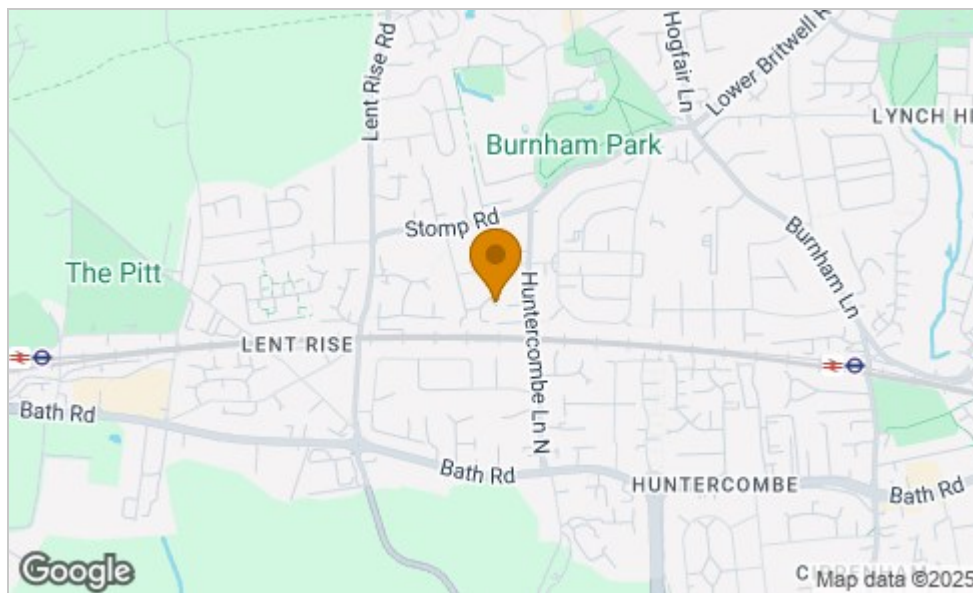





Floor Plan



Area Map



Energy Efficiency Graph

Energy Efficiency Rating		
	Current	Potential
Very energy efficient - lower running costs		
(92 plus) A		
(81-91) B		
(69-80) C		
(55-68) D		
(39-54) E		
(21-38) F		
(1-20) G		
Not energy efficient - higher running costs		
England & Wales EU Directive 2002/91/EC 		
Environmental Impact (CO₂) Rating		

Viewing

Please contact our Castle Hill Properties - London & Berkshire Office
on 020 8998 1118 if you wish to arrange a viewing appointment for this property
or require further information.

These particulars, whilst believed to be accurate are set out as a general outline only for guidance and do not constitute any part of an offer or contract. Intending purchasers should not rely on them as statements of representation of fact, but must satisfy themselves by inspection or otherwise as to their accuracy. No person in this firm's employment has the authority to make or give any representation or warranty in respect of the property.

Head Office, 23 The Avenue, West Ealing, London, W13 8JR
Tel: 020 8998 1118 Email: enquiries@castlehillproperties.co.uk <https://www.castlehillproperties.co.uk>